

2001 KHSAA

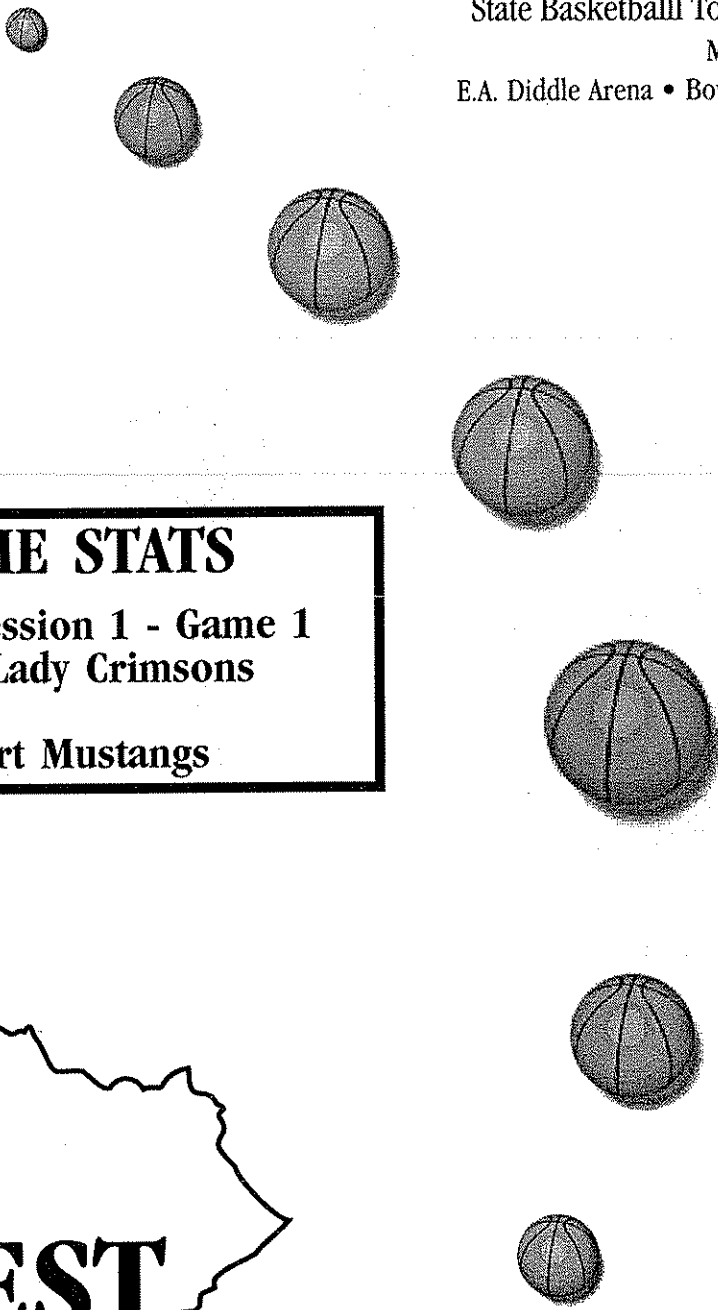


GIRLS' SWEET 16®

State Basketball Tournament

March 21-24

E.A. Diddle Arena • Bowling Green



FINAL GAME STATS

Wed., March 21 - Session 1 - Game 1

DuPont Manual Lady Crimson

vs.

Bishop Brossart Mustangs

the
GREATEST
SHOW

in

hoops!

KHSAA Basketball - Game Box Score

DuPont Manual Lady Crimson vs. Bishop Brossart Mustangs

Date: 03/21/2001 Time: 12:00 CST Site: Girls' Sweet 16-Diddle Arena Attendance: Unknown

Visitors: Bishop Brossart Mustangs															
##	Name	P	FG	3 Pt	FT	PTS	ORB	DRB	TR	PF	AST	TO	BS	ST	MIN
10	* Katie Schwegmann		7/15	1/2	2/4	17	3	1	4	4	1	8	0	4	31:19
15	* Jessica Lloyd		0/0	0/0	0/0	0	1	1	2	3	5	1	0	1	17:34
20	* Carrie Clift		5/10	0/1	2/6	12	2	4	6	4	1	3	0	2	27:39
21	* Jenna Schultz		2/7	1/3	0/0	5	0	0	0	0	2	1	0	0	24:29
33	* Stephanie Clark		5/8	0/0	0/0	10	2	3	5	1	0	3	0	1	27:51
11	Casey Geiman		2/5	0/0	0/0	4	2	1	3	0	0	0	0	0	14:31
13	Jessie Otto		1/2	0/0	1/2	3	0	0	0	0	1	0	0	0	8:13
22	Sarah Wright		0/0	0/0	0/2	0	1	0	1	0	0	0	0	0	0:41
25	Allison Cuthrell		0/0	0/0	0/0	0	0	0	0	0	0	0	0	0	0:41
30	Sarah Christen		0/1	0/0	0/0	0	0	0	0	0	0	0	0	0	0:41
32	Heather Giglia		0/0	0/0	0/0	0	0	0	0	0	0	0	0	0	0:41
34	Ashley Seiter		0/0	0/0	0/0	0	0	0	0	0	0	0	0	1	5:40
	Team						1	0	1						
	Totals		22/48	2/6	5/14	51	12	10	22	12	10	16	0	9	160
	Total FG		1st Half	6/18	33.3%	2nd Half	16/30	53.3%	Game	22/48	45.8%				
	3 PT FG		1st Half	1/2	50.0%	2nd Half	1/4	25.0%	Game	2/6	33.3%				
	Free Throws		1st Half	2/6	33.3%	2nd Half	3/8	37.5%	Game	5/14	35.7%				

Home: DuPont Manual Lady Crimson															
##	Name	P	FG	3 Pt	FT	PTS	ORB	DRB	TR	PF	AST	TO	BS	ST	MIN
20	* Morissa Benberry		2/6	1/4	3/5	8	1	0	1	0	0	2	1	0	19:13
24	* Chelsea Thompson		7/11	2/6	3/3	19	0	2	2	1	4	4	0	0	27:29
32	* Liz Plass		5/9	3/4	2/2	15	0	3	3	1	1	2	0	0	24:02
51	* Chandra Brown		3/4	0/0	0/0	6	3	4	7	2	5	1	3	2	20:38
55	* Sara McKemie		6/6	0/0	0/0	12	3	4	7	2	2	4	1	0	18:19
3	Ashley Butler		3/7	0/0	0/0	6	0	2	2	2	1	3	0	0	17:35
15	Erin Bolger		2/3	1/1	0/0	5	1	0	1	0	1	2	0	0	8:13
22	Dedra McMillion		0/0	0/0	0/0	0	0	0	0	0	0	0	0	0	0:41
23	Candyce Bingham		0/1	0/0	0/0	0	0	0	0	0	0	0	0	0	1:16
33	Ashley Miller		1/1	0/0	0/1	2	2	1	3	1	2	0	0	0	13:13
34	Ellen Doolittle		1/1	0/0	0/0	2	1	1	2	0	0	0	0	0	0:41
50	Kathryn Hohmann		0/0	0/0	0/0	0	0	0	0	0	0	1	0	0	0:41
54	Amy Uihman		0/0	0/0	0/0	0	0	2	2	0	0	0	1	1	7:18
10	Tiffany Burton		0/0	0/0	0/0	0	0	0	0	1	0	0	0	0	0:41
	Team						0	0	0						
	Totals		30/49	7/15	8/11	75	11	19	30	10	16	19	6	3	160
	Total FG		1st Half	14/27	51.9%	2nd Half	16/22	72.7%	Game	30/49	61.2%				
	3 PT FG		1st Half	5/12	41.7%	2nd Half	2/3	66.7%	Game	7/15	46.7%				
	Free Throws		1st Half	3/6	50.0%	2nd Half	5/5	100%	Game	8/11	72.7%				

Free Throw Pts	Bis	DuP	3Pt Points	Bis	DuP	Pts/Possession	Bis	DuP
Pts off Turnovers	5	8	2nd Chance Points	6	21	Pts off Bench	0.65	1.03
Total Rebounds	14	16	Team Rebounds	10	17	Dead Ball Reb	7	15
Off Rebound %	22	30	Def Rebound %	1	0	Total Rebound %	4	1
Technical Fouls	38.7	52.4		47.6	61.3		42.3	57.7
Officials	Bis	DuP	None	Bis	DuP	None		
	DuP	None		DuP	None			
			Bob Hall, Danny Percell, Glenn Gray					

	Qtr 1	Qtr 2	Qtr 3	Qtr 4	OT 1	OT 2	OT 3	OT 4	Total
Bishop Brossart Mustangs	8	7	19	17	0	0	0	0	51
DuPont Manual Lady Crimson	20	16	21	18	0	0	0	0	75

KHSAA Basketball - Play by Play Report - Period: 1 (pg 1)
DuPont Manual Lady Crimsons vs. Bishop Brossart Mustangs
 Date: 03/21/2001 Time: 12:00 CST Site: Girls' Sweet 16-Diddle Arena Attendance:

## Name	Action	Action	Score	Clock	Diff	## Name	Action	Action
20 M Benberry	Start Game					10 K Schwegmann	Start Game	
24 C Thompson	Start Game					15 J Lloyd	Start Game	
32 L Plass	Start Game					20 C Clift	Start Game	
51 C Brown	Start Game					21 J Schultz	Start Game	
55 S McKemie	Start Game					33 S Clark	Start Game	
51 C Brown	Jump Ball Win			1 7:57		33 S Clark	Jump Ball Loss	
24 C Thompson	3Pt Made		3-0	1 7:46	+3			
				1 7:30		10 K Schwegmann	Turnover	(Palming)
20 M Benberry	FT Made		4-0	1 7:15	+4	15 J Lloyd	Personal Foul	
20 M Benberry	FT Made		5-0	1 7:15	+5			
20 M Benberry	FT Attempt			1 7:15		33 S Clark	Def Rebound	
55 S McKemie	Personal Foul			1 7:00				
				1 7:00		20 C Clift	FT Attempt	Mustangs Deadball Reb
				1 7:00		20 C Clift	FT Attempt	10 K Schwegmann Off Reb
51 C Brown	Personal Foul			1 6:58				
33 A Miller	Enter Game	for 55 S McKemie		1 6:58				
			5-1	1 6:58	+4	10 K Schwegmann	FT Made	
51 C Brown	Def Rebound			1 6:58		10 K Schwegmann	FT Attempt	
32 L Plass	FG Attempt			1 6:49		15 J Lloyd	Def Rebound	
24 C Thompson	Def Rebound			1 6:34		10 K Schwegmann	FG Attempt	
51 C Brown	Turnover			1 6:22				
				1 6:22		10 K Schwegmann	Steal	
				1 6:21		15 J Lloyd	Turnover	(Double Dribble)
20 M Benberry	Turnover	(Bad Pass)		1 6:12				
				1 6:09		10 K Schwegmann	Steal	
				1 6:02		21 J Schultz	Turnover	(Traveling)
55 S McKemie	Enter Game	for 51 C Brown		1 6:02				
3 A Butler	Enter Game	for 20 M Benberry		1 6:02				
24 C Thompson	FG Made		7-1	1 5:49	+6			
			7-3	1 5:35	+4	33 S Clark	Layup Made	
32 L Plass	3Pt Attempt			1 5:23		20 C Clift	Def Rebound	
3 A Butler	Personal Foul			1 5:15				
				1 5:15		11 C Geiman	Enter Game	for 15 J Lloyd
51 C Brown	Enter Game	for 33 A Miller		1 5:15				
54 A Uihman	Enter Game	for 55 S McKemie		1 5:15				
				1 5:10		11 C Geiman	FG Attempt	11 C Geiman Off Reb
			7-5	1 4:59	+2	33 S Clark	FG Made	10 K Schwegmann Assist
32 L Plass	3Pt Made	24 C Thompson Assist	10-5	1 4:43	+5			
				1 4:31		10 K Schwegmann	Turnover	(Fumble)
24 C Thompson	3Pt Attempt	51 C Brown Off Reb		1 4:21				
51 C Brown	Putback Made		12-5	1 4:18	+7			
				1 4:06		10 K Schwegmann	Turnover	(Fumble)
24 C Thompson	Turnover	(Bad Pass)		1 4:01				
32 L Plass	Def Rebound			1 3:57		20 C Clift	3Pt Attempt	
3 A Butler	FG Attempt			1 3:28		20 C Clift	Def Rebound	
54 A Uihman	Block	54 A Uihman Def Reb		1 3:20		21 J Schultz	Layup Att	
32 L Plass	3Pt Made	51 C Brown Assist	15-5	1 3:07	+10			
				1 3:02		Mustangs	20 Sec Time Out	
				1 3:02		34 A Seiter	Enter Game	for 21 J Schultz
55 S McKemie	Enter Game	for 54 A Uihman		1 3:02				
20 M Benberry	Enter Game	for 3 A Butler		1 3:02				
24 C Thompson	3Pt Attempt			1 2:59		20 C Clift	Def Rebound	
				1 2:49				
				1 2:42		33 S Clark	Turnover	(Traveling)
55 S McKemie	FG Made	51 C Brown Assist	17-5	1 2:28	+12			
				1 2:20		10 K Schwegmann	Turnover	(Bad Pass)
32 L Plass	FG Attempt	20 M Benberry Off Reb		1 1:49				
55 S McKemie	Turnover	(Bad Pass)		1 1:33				
				1 1:33		15 J Lloyd	Enter Game	for 34 A Seiter
51 C Brown	Block			1 1:19		20 C Clift	FG Attempt	33 S Clark Off Reb
3 A Butler	Enter Game	for 32 L Plass		1 1:10				
				1 1:10		21 J Schultz	Enter Game	for 20 C Clift
51 C Brown	Def Rebound			1 1:03		10 K Schwegmann	FG Attempt	
24 C Thompson	3Pt Made	51 C Brown Assist	20-5	1 0:51	+15			
			20-8	1 0:31	+12	21 J Schultz	3Pt Made	15 J Lloyd Assist
20 M Benberry	FG Attempt	55 S McKemie Off Reb		1 0:02				

End of Period Summary Lady Crimsons 20 Mustangs 8

Largest Lead: Lady Crimsons 20 Mustangs 5 (15 pts)
 Lead in Period: Lady Crimsons 20 Mustangs 5 (15 pts)
 4 for 0 oppo pts
 3 for 2 pts
 7/14 for 50.0 %
 2/3 for 66.7 %

Turnovers
 2nd Chances
 Field Goals
 Free Throws

Lead Changes: 0 Ties: 0
 Lead Changes: 0 Ties: 0 (this period)
 7 for 8 oppo pts
 3 for 3 pts
 3/9 for 33.3 %
 1/4 for 25.0 %

KHSAA Basketball - Play by Play Report - Period: 2 (pg 1)
DuPont Manual Lady Crimson vs. Bishop Crossart Mustangs
 Date: 03/21/2001 Time: 12:00 CST Site: Girls' Sweet 16-Diddle Arena Attendance:

##	Name	Action	Action	Score	Clock	Diff	##	Name	Action	Action
20	M Benberry	Leave Game			2 8:00					
24	C Thompson	Leave Game			2 8:00					
51	C Brown	Leave Game			2 8:00					
55	S McKemie	Leave Game			2 8:00					
3	A Butler	Leave Game			2 8:00					
3	A Butler	Enter game			2 8:00		20	C Clift	Enter Game	for 15 J Lloyd
33	A Miller	Enter game			2 8:00					
54	A Uihman	Enter game			2 8:00					
32	L Plass	Enter game			2 8:00					
20	M Benberry	Enter game	for 20 M Benberry		2 8:00					
24	C Thompson	Enter game			2 8:00					
3	A Butler	Layup Made		22-8	2 7:48	+14	15	J Lloyd	Enter Game	for 11 C Geiman
54	A Uihman	Steal			2 7:42					
24	C Thompson	Turnover	(Bad Pass)		2 7:37					
3	A Butler	FG Attempt	33 A Miller Off Reb	22-10	2 7:21	+12	10	K Schwegmann	FG Made	
33	A Miller	Putback Made		24-10	2 6:50	+14				
15	E Bolger	Enter Game	for 24 C Thompson		2 6:50		15	J Lloyd	Personal Foul	
33	A Miller	FT Attempt			2 6:50		13	J Otto	Enter Game	for 15 J Lloyd
33	A Miller	Leave Game			2 6:35		10	K Schwegmann	Def Rebound	
51	C Brown	Enter Game	for 54 A Uihman		2 6:35		20	C Clift	Turnover	(Fumble)
55	S McKemie	Enter game			2 5:59					
55	S McKemie	FG Made	15 E Bolger Assist	26-10	2 5:59	+16	33	S Clark	Personal Foul	
3	A Butler	Turnover	(Bad Pass)	26-12	2 5:25	+14	20	C Clift	Layup Made	21 J Schultz Assist
15	E Bolger	Layup Made		26-14	2 5:17	+12	10	K Schwegmann	FG Made	
3	A Butler	Personal Foul		28-14	2 5:11	+14				
32	L Plass	Leave Game			2 4:40					
20	M Benberry	Enter Game	for 3 A Butler		2 4:40					
24	C Thompson	Enter game			2 4:40					
24	C Thompson	3Pt Attempt	51 C Brown Off Reb	28-15	2 4:40	+13	11	C Geiman	Enter Game	for 21 J Schultz
20	M Benberry	3Pt Attempt	51 C Brown Off Reb		2 4:40		10	K Schwegmann	FT Attempt	Mustangs Deadball Reb
20	M Benberry	3Pt Attempt	15 E Bolger Off Reb		2 4:23		10	K Schwegmann	FT Made	
15	E Bolger	3Pt Made	24 C Thompson Assist	31-15	2 3:44	+16				
51	C Brown	Block			2 3:35		13	J Otto	FG Attempt	Mustangs Off Reb
33	A Miller	Enter Game	for 51 C Brown		2 3:20					
55	S McKemie	Def Rebound			2 3:09		11	C Geiman	Layup Att	
15	E Bolger	Turnover	(Bad Pass)		2 3:09					
15	E Bolger	FG Attempt			2 3:03		20	C Clift	Steal	
15	E Bolger	Charge Taken			2 2:55					
15	E Bolger	Turnover	(Bad Pass)		2 2:55		34	A Seiter	Enter Game	for 13 J Otto
32	L Plass	Enter Game	for 15 E Bolger		2 2:47		10	K Schwegmann	Turnover	(Bad Pass)
33	A Miller	Def Rebound			2 2:30		33	S Clark	Def Rebound	
51	C Brown	Enter Game	for 33 A Miller		2 2:22		33	S Clark	FG Attempt	10 K Schwegmann Off Reb
20	M Benberry	FT Attempt	Lady Crimson's Deadball Reb	32-15	2 2:20	+17	10	K Schwegmann	Offensive Foul	
20	M Benberry	FT Made			2 2:20		10	K Schwegmann	Turnover	
51	C Brown	Steal			2 2:20		21	J Schultz	Enter Game	for 11 C Geiman
24	C Thompson	3Pt Attempt	55 S McKemie Off Reb	34-15	2 2:20	+19				
55	S McKemie	Putback Made			2 2:00		20	C Clift	Steal	
51	C Brown	Steal			2 1:58					
24	C Thompson	3Pt Attempt			2 1:58		10	K Schwegmann	FG Attempt	
55	S McKemie	Putback Made			2 1:49		20	C Clift	Personal Foul	
51	C Brown	Steal			2 1:43					
24	C Thompson	3Pt Attempt			2 1:43					
55	S McKemie	Putback Made			2 1:31		20	C Clift	Layup Att	33 S Clark Off Reb
51	C Brown	Steal			2 1:26		33	S Clark	Turnover	
24	C Thompson	3Pt Attempt			2 1:25					
55	S McKemie	Putback Made			2 1:17					
51	C Brown	Steal			2 1:13					
24	C Thompson	3Pt Attempt			2 1:13					
55	S McKemie	Putback Made			2 1:13					
51	C Brown	Steal			2 1:13					
24	C Thompson	3Pt Attempt			2 1:13					
55	S McKemie	Putback Made			2 1:13					
51	C Brown	Steal			2 1:13					
24	C Thompson	3Pt Attempt			2 1:13					
55	S McKemie	Putback Made			2 1:13					
51	C Brown	Steal			2 1:13					
24	C Thompson	3Pt Attempt			2 1:13					
55	S McKemie	Putback Made			2 1:13					
51	C Brown	Steal			2 1:13					
24	C Thompson	3Pt Attempt			2 1:13					
55	S McKemie	Putback Made			2 1:13					
51	C Brown	Steal			2 1:13					
24	C Thompson	3Pt Attempt			2 1:13					
55	S McKemie	Putback Made			2 1:13					
51	C Brown	Steal			2 1:13					
24	C Thompson	3Pt Attempt			2 1:13					
55	S McKemie	Putback Made			2 1:13					
51	C Brown	Steal			2 1:13					
24	C Thompson	3Pt Attempt			2 1:13					
55	S McKemie	Putback Made			2 1:13					
51	C Brown	Steal			2 1:13					
24	C Thompson	3Pt Attempt			2 1:13					
55	S McKemie	Putback Made			2 1:13					
51	C Brown	Steal			2 1:13					
24	C Thompson	3Pt Attempt			2 1:13					
55	S McKemie	Putback Made			2 1:13					
51	C Brown	Steal			2 1:13					
24	C Thompson	3Pt Attempt			2 1:13					
55	S McKemie	Putback Made			2 1:13					
51	C Brown	Steal			2 1:13					
24	C Thompson	3Pt Attempt			2 1:13					
55	S McKemie	Putback Made			2 1:13					
51	C Brown	Steal			2 1:13					
24	C Thompson	3Pt Attempt			2 1:13					
55	S McKemie	Putback Made			2 1:13					
51	C Brown	Steal			2 1:13					
24	C Thompson	3Pt Attempt			2 1:13					
55	S McKemie	Putback Made			2 1:13					
51	C Brown	Steal			2 1:13					
24	C Thompson	3Pt Attempt			2 1:13					
55	S McKemie	Putback Made			2 1:13					
51	C Brown	Steal			2 1:13					
24	C Thompson	3Pt Attempt			2 1:13					
55	S McKemie	Putback Made			2 1:13					
51	C Brown	Steal			2 1:13					
24	C Thompson	3Pt Attempt			2 1:13					
55	S McKemie	Putback Made			2 1:13					
51	C Brown	Steal			2 1:13					
24	C Thompson	3Pt Attempt			2 1:13					
55	S McKemie	Putback Made			2 1:13					
51	C Brown	Steal			2 1:13					
24	C Thompson	3Pt Attempt			2 1:13					
55	S McKemie	Putback Made			2 1:13					
51	C Brown	Steal			2 1:13					
24	C Thompson	3Pt Attempt			2 1:13					
55	S McKemie	Putback Made			2 1:13					
51	C Brown	Steal			2 1:13					
24	C Thompson	3Pt Attempt			2 1:13					
55	S McKemie	Putback Made			2 1:13					
51	C Brown	Steal			2 1:13					
24	C Thompson	3Pt Attempt			2 1:13					
55	S McKemie	Putback Made			2 1:13					
51	C Brown	Steal			2 1:13					
24	C Thompson	3Pt Attempt			2 1:13					
55	S McKemie	Putback Made			2 1:13					
51	C Brown	Steal			2 1:13					
24	C Thompson	3Pt Attempt			2 1:13					
55	S McKemie	Putback Made			2 1:13					
51	C Brown	Steal			2 1:13					
24	C Thompson	3Pt Attempt			2 1:13					
55	S McKemie	Putback Made			2 1:13					
51	C Brown	Steal			2 1:13					
24	C Thompson	3Pt Attempt			2 1:13					
55	S McKemie	Putback Made			2 1:13					
51	C Brown	Steal			2 1:13					
24	C Thompson	3Pt Attempt			2 1:13					
55	S McKemie	Putback Made			2 1:13					
51	C Brown	Steal			2 1:13					
24	C Thompson	3Pt Attempt			2 1:13					
55	S McKemie	Putback Made			2 1:13					
51	C Brown	Steal			2 1:13					
24	C Thompson	3Pt Attempt			2 1:13					
55	S McKemie	Putback Made			2 1:13					
51	C Brown	Steal			2 1:13					
24	C Thompson	3Pt Attempt			2 1:13					
55	S McKemie	Putback Made			2 1:13					
51	C Brown	Steal			2 1:13					
24	C Thompson	3Pt Attempt			2 1:13					
55	S McKemie	Putback Made			2 1:13					
51	C Brown	Steal			2 1:13					
24	C Thompson	3Pt Attempt			2 1:13					
55	S McKemie	Putback Made			2 1:13					
51	C Brown	Steal			2 1:13					
24	C Thompson	3Pt Attempt			2 1:13					
55	S McKemie	Putback Made			2 1:13					
51	C Brown	Steal			2 1:13					
24	C Thompson	3Pt Attempt			2 1:13					
55	S McKemie	Putback Made			2 1:13					
51	C Brown	Steal			2 1:13					
24	C Thompson	3Pt Attempt			2 1:13					
55	S McKemie	Putback Made			2 1:13					
51	C Brown	Steal			2 1:13					
24	C Thompson	3Pt Attempt			2 1:13					
55	S McKemie	Putback Made			2 1:13					
51	C Brown	Steal			2 1:13					
24	C Thompson	3Pt Attempt			2 1:13					
55	S McKemie	Putback Made			2 1:13					
51	C Brown	Steal			2 1:13					
24	C Thompson	3Pt Attempt			2 1:13					
55	S McKemie	Putback Made			2 1:13					
51	C Brown	Steal			2 1:13					
24	C Thompson	3Pt Attempt			2 1:13					
55	S McKemie	Putback Made			2 1:13					
51	C Brown	Steal			2 1:13					
24	C Thompson	3Pt Attempt			2 1:13					
55	S McKemie	Putback Made			2 1:13					
51	C Brown	Steal			2 1:13					
24	C Thompson	3Pt Attempt			2 1:13					
55	S McKemie	Putback Made								

KHSAA Basketball - Game Box Score

DuPont Manual Lady Crimson vs. Bishop Brossart Mustangs

Date: 03/21/2001 Time: 12:00 CST Site: Girls' Sweet 16-Diddle Arena Attendance: Unknown

Visitors: Bishop Brossart Mustangs																
##	Name	P	FG	3 Pt	FT	PTS	ORB	DRB	TR	PF	AST	TO	BS	ST	MIN	
10	* Katie Schwegmann		2/5	0/0	2/4	6	2	1	3	1	1	7	0	2	16:00	
15	* Jessica Lloyd		0/0	0/0	0/0	0	0	1	1	2	1	1	0	0	5:28	
20	* Carrie Clift		1/4	0/1	0/2	2	0	3	3	2	0	2	0	2	14:50	
21	* Jenna Schultiz		1/3	1/1	0/0	3	0	0	0	0	1	1	0	0	11:48	
33	* Stephanie Clark		2/3	0/0	0/0	4	2	2	4	1	0	2	0	0	14:47	
11	Casey Geiman		0/2	0/0	0/0	0	1	0	1	0	0	0	0	0	7:35	
13	Jessie Otto		0/1	0/0	0/0	0	0	0	0	0	0	0	0	0	5:08	
22	Sarah Wright		0/0	0/0	0/0	0	0	0	0	0	0	0	0	0	DNP	
25	Allison Cuthrell		0/0	0/0	0/0	0	0	0	0	0	0	0	0	0	DNP	
30	Sarah Christen		0/0	0/0	0/0	0	0	0	0	0	0	0	0	0	DNP	
32	Heather Giglia		0/0	0/0	0/0	0	0	0	0	0	0	0	0	0	DNP	
34	Ashley Seiter		0/0	0/0	0/0	0	0	0	0	0	0	0	0	0	4:24	
	Team						1	0	1							
	Totals		6/18	1/2	2/6	15	6	7	13	6	3	13	0	4	80	
	Total FG		1st Half		6/18	33.3%	2nd Half	0/0	0.00%	Game	6/18	33.3%				
	3 PT FG		1st Half		1/2	50.0%	2nd Half	0/0	0.00%	Game	1/2	50.0%				
	Free Throws		1st Half		2/6	33.3%	2nd Half	0/0	0.00%	Game	2/6	33.3%				

Home: DuPont Manual Lady Crimson																
##	Name	P	FG	3 Pt	FT	PTS	ORB	DRB	TR	PF	AST	TO	BS	ST	MIN	
20	* Morissa Benberry		0/3	0/2	3/5	3	1	0	1	0	0	2	0	0	8:41	
24	* Chelsea Thompson		3/7	2/6	0/0	8	0	1	1	0	2	2	0	0	13:50	
32	* Liz Plass		3/6	2/3	0/0	8	0	1	1	0	0	0	0	0	12:08	
51	* Chandra Brown		1/1	0/0	0/0	2	3	3	6	1	3	1	2	2	11:46	
55	* Sara McKemie		3/3	0/0	0/0	6	2	1	3	1	0	1	0	0	10:09	
3	Ashley Butler		1/3	0/0	0/0	2	0	0	0	2	1	1	0	0	8:29	
15	Erin Bolger		2/3	1/1	0/0	5	1	0	1	0	1	2	0	0	4:52	
22	Dedra McMillion		0/0	0/0	0/0	0	0	0	0	0	0	0	0	0	DNP	
23	Candyce Bingham		0/0	0/0	0/0	0	0	0	0	0	0	0	0	0	DNP	
33	Ashley Miller		1/1	0/0	0/1	2	1	1	2	0	0	0	0	0	5:10	
34	Ellen Doolittle		0/0	0/0	0/0	0	0	0	0	0	0	0	0	0	DNP	
50	Kathryn Hohmann		0/0	0/0	0/0	0	0	0	0	0	0	0	0	0	DNP	
54	Amy Uhlman		0/0	0/0	0/0	0	0	1	1	0	0	0	1	1	4:55	
10	Tiffany Burton		0/0	0/0	0/0	0	0	0	0	0	0	0	0	0	DNP	
	Team						0	0	0							
	Totals		14/27	5/12	3/6	36	8	8	16	4	7	9	3	3	80	
	Total FG		1st Half		14/27	51.9%	2nd Half	0/0	0.00%	Game	14/27	51.9%				
	3 PT FG		1st Half		5/12	41.7%	2nd Half	0/0	0.00%	Game	5/12	41.7%				
	Free Throws		1st Half		3/6	50.0%	2nd Half	0/0	0.00%	Game	3/6	50.0%				

Free Throw Pts	Bis	DuP	3Pt Points	Bis	DuP	Pts/Possession	Bis	DuP
Pts off Turnovers	2	3	2nd Chance Points	3	15	Pts off Bench	0.38	0.90
Total Rebounds	4	12	Team Rebounds	3	11	Dead Ball Reb	0	9
Off Rebound %	13	16	Def Rebound %	1	0	Total Rebound %	2	1
Technical Fouls	42.9	53.3		46.7	57.1		44.8	55.2
Officials	Bis	None						
	DuP	None						
		Bob Hall, Danny Percell, Glenn Gray						

	Qtr 1	Qtr 2	Qtr 3	Qtr 4	OT 1	OT 2	OT 3	OT 4	Total
Bishop Brossart Mustangs	8	7	0	0	0	0	0	0	15
DuPont Manual Lady Crimson	20	16	0	0	0	0	0	0	36

KHSAA Basketball - Play by Play Report - Period: 3 (pg 1)
DuPont Manual Lady Crimsonns vs. Bishop Brossart Mustangs
 Date: 03/21/2001 Time: 12:00 CST Site: Girls' Sweet 16-Diddle Arena Attendance:

##	Name	Action	Action	Score	Clock	Diff	##	Name	Action	Action
24	C Thompson	Leave Game			3 8:00					
32	L Plass	Leave Game			3 8:00					
51	C Brown	Leave Game			3 8:00					
3	A Butler	Leave Game			3 8:00					
54	A Uihman	Leave Game			3 8:00					
					3 8:00		10	K Schwegmann	Leave Game	
					3 8:00		20	C Clift	Leave Game	
					3 8:00		21	J Schultz	Leave Game	
					3 8:00		13	J Otto	Leave Game	
					3 8:00		10	K Schwegmann	Enter Game	for 34 A Seiter
					3 8:00		15	J Lloyd	Enter game	
					3 8:00		20	C Clift	Enter game	
					3 8:00		21	J Schultz	Enter game	
					3 8:00		33	S Clark	Enter game	
51	C Brown	Enter game			3 8:00					
55	S McKemie	Enter game			3 8:00					
32	L Plass	Enter game			3 8:00					
24	C Thompson	Enter game			3 8:00					
20	M Benberry	Enter game			3 8:00					
55	S McKemie	Turnover	(Bad Pass)		3 7:45					
					3 7:43		15	J Lloyd	Steal	
55	S McKemie	Personal Foul			3 7:36					
33	A Miller	Enter Game	for 55 S McKemie		3 7:36		20	C Clift	FT Attempt	Mustangs Deadball Reb
					3 7:36		20	C Clift	FT Attempt	10 K Schwegmann Off Reb
					3 7:36		10	K Schwegmann	Putback Made	
				36-17	3 7:33	+19				
20	M Benberry	Layup Made	24 C Thompson Assist		3 7:27	+21				
				38-17	3 7:04	+19	33	S Clark	FG Made	
51	C Brown	FG Made	33 A Miller Assist		3 6:45	+21				
51	C Brown	Def Rebound			3 6:22		21	J Schultz	FG Attempt	
24	C Thompson	FG Made			3 6:12	+23				
					3 6:05		20	C Clift	Turnover	(Bad Pass)
32	L Plass	Layup Att			3 5:49		33	S Clark	Def Rebound	
51	C Brown	Personal Foul			3 5:42	+22	20	C Clift	FT Made	
					3 5:42	+21	20	C Clift	FT Made	
51	C Brown	FG Attempt			3 5:33		20	C Clift	Def Rebound	
					3 5:25	+19	33	S Clark	FG Made	15 J Lloyd Assist
32	L Plass	Turnover	(Bad Pass)		3 5:12					
					3 5:10		10	K Schwegmann	Steal	
					3 5:06	+17	21	J Schultz	Layup Made	15 J Lloyd Assist
32	L Plass	3Pt Made	51 C Brown Assist		3 4:34	+20				
					3 4:13		33	S Clark	FG Attempt	15 J Lloyd Off Reb
					3 4:10	+17	10	K Schwegmann	3Pt Made	
20	M Benberry	3Pt Made	32 L Plass Assist		3 3:51	+20				
					3 3:40	+18	33	S Clark	Layup Made	
24	C Thompson	FG Made	51 C Brown Assist		3 3:18	+20				
					3 3:18		20	C Clift	Personal Foul	
20	M Benberry	Leave Game			3 3:18					
32	L Plass	Leave Game			3 3:18					
55	S McKemie	Enter Game	for 51 C Brown		3 3:18					
3	A Butler	Enter game			3 3:18					
15	E Bolger	Enter game			3 3:18					
					3 3:18		11	C Geiman	Enter Game	for 15 J Lloyd
24	C Thompson	FT Made			3 3:18	+21				
					3 3:06		20	C Clift	FG Attempt	11 C Geiman Off Reb
					3 3:00		10	K Schwegmann	3Pt Attempt	20 C Clift Off Reb
					3 2:57	+19	20	C Clift	Putback Made	
					3 2:39					
54	A Uihman	Enter Game	for 33 A Miller		3 2:39					
55	S McKemie	Turnover	(Traveling)		3 2:26					
					3 2:26		15	J Lloyd	Enter Game	for 21 J Schultz
					3 2:13		10	K Schwegmann	Turnover	(Traveling)
3	A Butler	FG Made			3 2:02	+21				
					3 1:50	+19	20	C Clift	Layup Made	15 J Lloyd Assist
24	C Thompson	FG Made	55 S McKemie Assist		3 1:23	+21				
33	A Miller	Enter Game	for 54 A Uihman		3 1:12					
32	L Plass	Enter Game	for 15 E Bolger		3 1:12					
55	S McKemie	Block	55 S McKemie Def Reb		3 1:01		11	C Geiman	FG Attempt	
					3 0:56		10	K Schwegmann	Personal Foul	
3	A Butler	FG Attempt	55 S McKemie Off Reb		3 0:37					
55	S McKemie	Putback Made			3 0:36	+23				
24	C Thompson	Def Rebound			3 0:28		33	S Clark	FG Attempt	
24	C Thompson	Turnover	(Bad Pass)		3 0:23					
					3 0:23		21	J Schultz	Enter Game	for 33 S Clark
20	M Benberry	Enter Game	for 24 C Thompson		3 0:23					
20	M Benberry	Block	3 A Butler Def Reb		3 0:12		10	K Schwegmann	FG Attempt	
3	A Butler	FG Attempt	33 A Miller Off Reb		3 0:01					

End of Period Summary Lady Crimsonns 57 Mustangs 34

Largest Lead: Lady Crimsonns 42 Mustangs 19 (23 pts)
Lead in Period: Lady Crimsonns 42 Mustangs 19 (23 pts)
 4 for 4 oppo pts
 2 for 2 pts
 9/13 for 69.2 %
 1/1 for 100 %

Turnovers
2nd Chances
Field Goals
Free Throws

Lead Changes: 0 Ties: 0
Lead Changes: 0 Ties: 0 (this period)
 2 for 2 oppo pts
 4 for 7 pts
 8/15 for 53.3 %
 2/4 for 50.0 %

KHSAA Basketball - Play by Play Report - Period: 4 (pg 1)
 DuPont Manual Lady Crimsonns vs. Bishop Brossart Mustangs
 Date: 03/21/2001 Time: 12:00 CST Site: Girls' Sweet 16-Diddle Arena Attendance:

## Name	Action	Action	Score	Clock	Diff	## Name	Action	Action
				4 8:00		13 J Otto	Enter Game	for 20 C Clift
32 L Plass	Layup Made		59-34	4 7:51	+25			
20 M Benberry	3Pt Attempt		59-36	4 7:41	+23	10 K Schwegmann	Layup Made	
				4 7:18		11 C Geiman	Def Rebound	
3 A Butler	Turnover		59-38	4 7:03	+21	11 C Geiman	FG Made	13 J Otto Assist
				4 6:51				
Lady Crimsonns	20 Sec Time Out		59-40	4 6:46	+19	10 K Schwegmann	Steal	
55 S McKemie	Leave Game			4 6:43		10 K Schwegmann	Layup Made	
24 C Thompson	Enter Game	for 3 A Butler		4 6:43				
51 C Brown	Enter game	for 20 M Benberry		4 6:43				
3 A Butler	Enter game			4 6:43				
				4 6:43		33 S Clark	Enter Game	for 11 C Geiman
51 C Brown	Layup Made	33 A Miller Assist	61-40	4 6:24	+21			
33 A Miller	Personal Foul			4 6:06				
3 A Butler	Leave Game			4 6:06				
20 M Benberry	Enter Game	for 33 A Miller		4 6:06				
54 A Uihman	Enter game			4 6:06				
				4 6:06				
54 A Uihman	Def Rebound		61-41	4 6:06	+20	13 J Otto	FT Made	
32 L Plass	Turnover			4 6:06		13 J Otto	FT Attempt	
				4 5:58				
				4 5:57		33 S Clark	Steal	
			61-43	4 5:42	+18	13 J Otto	Layup Made	15 J Lloyd Assist
				4 5:30		10 K Schwegmann	Personal Foul	
				4 5:30		20 C Clift	Enter Game	for 13 J Otto
				4 5:28				
24 C Thompson	Turnover	(Violation)		4 5:10				
32 L Plass	Personal Foul			4 5:10				
32 L Plass	Leave Game			4 5:10				
55 S McKemie	Enter Game	for 54 A Uihman		4 5:10				
3 A Butler	Enter game			4 5:10				
				4 5:10				
			61-45	4 5:05	+16	10 K Schwegmann	FG Made	
3 A Butler	Turnover	(Violation)		4 4:46				
24 C Thompson	Personal Foul			4 4:33				
3 A Butler	Def Rebound			4 4:23		21 J Schultz	3Pt Attempt	
3 A Butler	Layup Made		63-45	4 4:07	+18			
51 C Brown	Block	55 S McKemie Def Reb (Traveling)		4 3:51		20 C Clift	FG Attempt	
55 S McKemie	Turnover	for 55 S McKemie		4 3:51				
32 L Plass	Enter Game			4 3:51				
				4 3:48		33 S Clark	Turnover	(Fumble)
				4 3:48				
15 E Bolger	Enter Game	for 20 M Benberry	64-45	4 3:41	+19	20 C Clift	Personal Foul	
24 C Thompson	FT Made		65-45	4 3:41	+20			
24 C Thompson	FT Made			4 3:31		10 K Schwegmann	FG Attempt	20 C Clift Off Reb
				4 3:21		21 J Schultz	3Pt Attempt	
32 L Plass	Def Rebound			4 3:02		15 J Lloyd	Personal Foul	
				4 3:02		11 C Geiman	Enter Game	for 15 J Lloyd
				4 3:02				
32 L Plass	FT Made		66-45	4 3:02	+21			
32 L Plass	FT Made		67-45	4 3:02	+22			
				4 3:00				
				4 2:48	+20	20 C Clift	FG Made	21 J Schultz Assist
				4 2:33				
51 C Brown	Leave Game			4 2:33				
20 M Benberry	Enter Game	for 15 E Bolger		4 2:33				
55 S McKemie	Enter game			4 2:33				
				4 2:33				
			67-49	4 2:25	+18	20 C Clift	Layup Made	
55 S McKemie	Layup Made		69-49	4 2:02	+20			
32 L Plass	Def Rebound			4 1:52		10 K Schwegmann	FG Attempt	
55 S McKemie	FG Made	24 C Thompson Assist	71-49	4 1:41	+22			
55 S McKemie	Def Rebound			4 1:18		10 K Schwegmann	FG Attempt	
				4 1:16		10 K Schwegmann	Personal Foul	
23 C Bingham	Enter Game	for 3 A Butler		4 1:16				
				4 1:16		10 K Schwegmann	Leave Game	
				4 1:16		20 C Clift	Leave Game	
				4 1:16		21 J Schultz	Leave Game	
				4 1:16		33 S Clark	Leave Game	
				4 1:16		30 S Christen	Enter Game	for 11 C Geiman
				4 1:16		34 A Seiter	Enter game	for 30 S Christen
				4 1:16		11 C Geiman	Enter game	
				4 1:16		10 K Schwegmann	Enter game	
				4 1:16		20 C Clift	Enter game	
				4 1:16		13 J Otto	Enter game	
24 C Thompson	FG Made	55 S McKemie Assist	73-49	4 1:06	+24			
			73-51	4 0:59	+22	11 C Geiman	FG Made	20 C Clift Assist
Lady Crimsonns	20 Sec Time Out			4 0:41				
				4 0:41		10 K Schwegmann	Leave Game	
				4 0:41		20 C Clift	Leave Game	
				4 0:41		11 C Geiman	Leave Game	
				4 0:41		13 J Otto	Leave Game	
				4 0:41		34 A Seiter	Leave Game	
20 M Benberry	Leave Game			4 0:41				
24 C Thompson	Leave Game			4 0:41				
32 L Plass	Leave Game			4 0:41				
55 S McKemie	Leave Game			4 0:41				
23 C Bingham	Leave Game			4 0:41				
				4 0:41		22 S Wright	Enter game	
				4 0:41		25 A Cuthrell	Enter game	

KHSAA Basketball - Play by Play Report - Period: 4 (pg 2)
DuPont Manual Lady Crimson vs. Bishop Crossart Mustangs
 Date: 03/21/2001 Time: 12:00 CST Site: Girls' Sweet 16-Diddle Arena Attendance:

## Name	Action	Action	Score	Clock	Diff	## Name	Action	Action
10 T Burton	Enter game			4 0:41				
				4 0:41		34 A Seiter	Enter game	
				4 0:41		32 H Giglia	Enter game	
				4 0:41		30 S Christen	Enter game	
34 E Doolittle	Enter game			4 0:41				
23 C Bingham	Enter game			4 0:41				
22 D McMillion	Enter game			4 0:41				
50 K Hohmann	Enter game			4 0:41				
50 K Hohmann	Turnover			4 0:21				
				4 0:21		34 A Seiter	Steal	
				4 0:11		30 S Christen	FG Attempt	22 S Wright Off Reb
10 T Burton	Personal Foul			4 0:08				
				4 0:08		22 S Wright	FT Attempt	Mustangs Deadball Reb
34 E Doolittle	Def Rebound			4 0:08		22 S Wright	FT Attempt	
23 C Bingham	FG Attempt	34 E Doolittle Off Reb		4 0:00				
34 E Doolittle	Putback Made		75-51	4 0:00	+24			

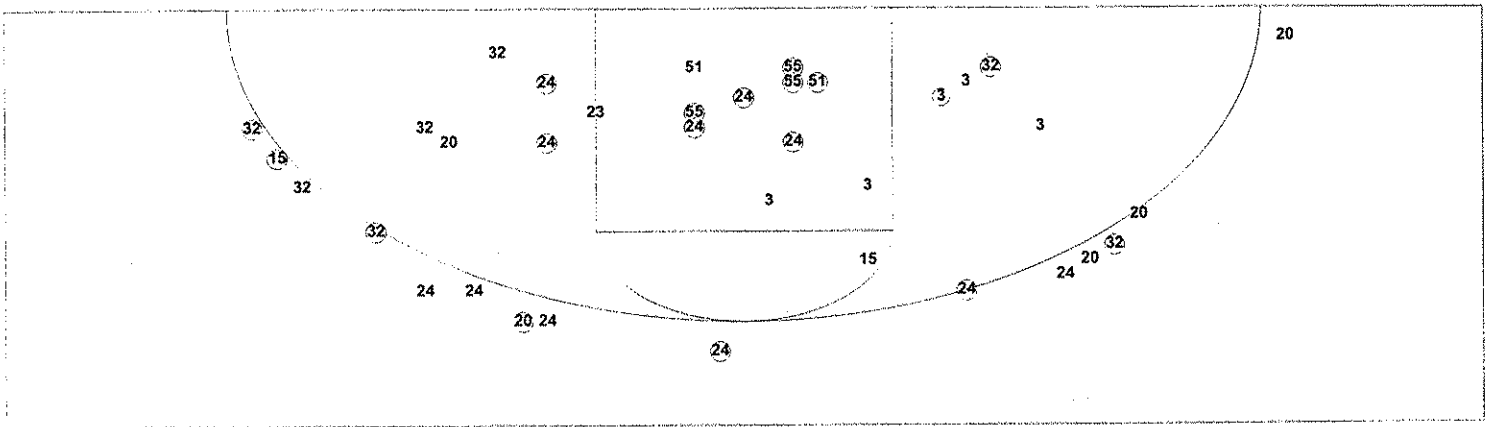
End of Period Summary Lady Crimson 75 Mustangs 51

Largest Lead: Lady Crimson 59 Mustangs 34 (25 pts)
Lead in Period: Lady Crimson 59 Mustangs 34 (25 pts)
 6 for 6 oppo pts
 1 for 4 pts
 7/9 for 77.8 %
 4/4 for 100 %

Turnovers
 2nd Chances
 Field Goals
 Free Throws

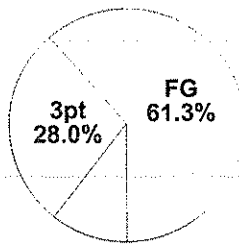
Lead Changes: 0 Ties: 0
Lead Changes: 0 Ties: 0 (this period)
 1 for 2 oppo pts
 2 for 0 pts
 8/15 for 53.3 %
 1/4 for 25.0 %

KHSAA Basketball - TEAM SHOT CHART for the Lady Crimsons
DuPont Manual Lady Crimsons vs. Bishop Brossart Mustangs
DATE: 03/21/2001 TIME: 12:00 CST SITE: Girls' Sweet 16-Diddle Arena

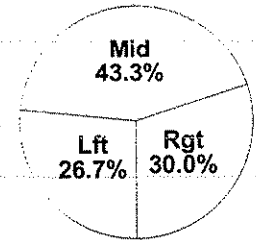


Shot Summary	M/A	%	PTS
3Pt FG	7/15	46.7%	21
2Pt FG	23/34	67.6%	46
Layups - L	2/2	100.0%	4
Layups - R	5/6	83.3%	10
Dunks	0/0	0.0%	0
Putbacks	5/5	100.0%	10
Overall Shooting	30/49	61.2%	67
Free Throws	8/11	72.7%	8
Total Points			75

Scoring Distribution

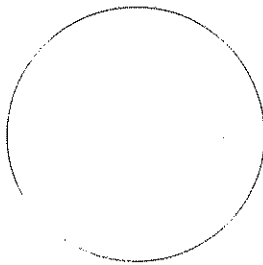


Scoring Locations

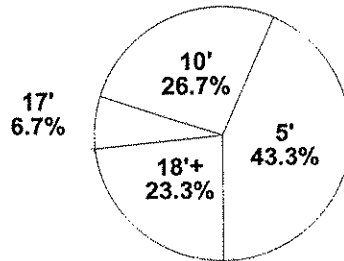


By Period	FG											FT		ORB	DRB	TR	PF	AST	TO	BS	ST	P/S
	FG	FGA	FG%	3Pt	3PA	3P%	FT	FTA	FT%	PTS	PTS											
1st Period	7	14	50.0	4	7	57.1	2	3	66.7	20	3	5	8	3	4	4	2	0	1.33			
2nd Period	7	13	53.8	1	5	20.0	1	3	33.3	16	5	3	8	1	3	5	1	3	1.14			
3rd Period	9	13	69.2	2	2	100	1	1	100	21	2	4	6	2	6	4	2	0	1.62			
4th Period	7	9	77.8	0	1	0.00	4	4	100	18	1	7	8	4	3	6	1	0	1.64			
Game	30	49	61.2	7	15	46.7	8	11	72.7	75	11	19	30	10	16	19	6	3	1.39			

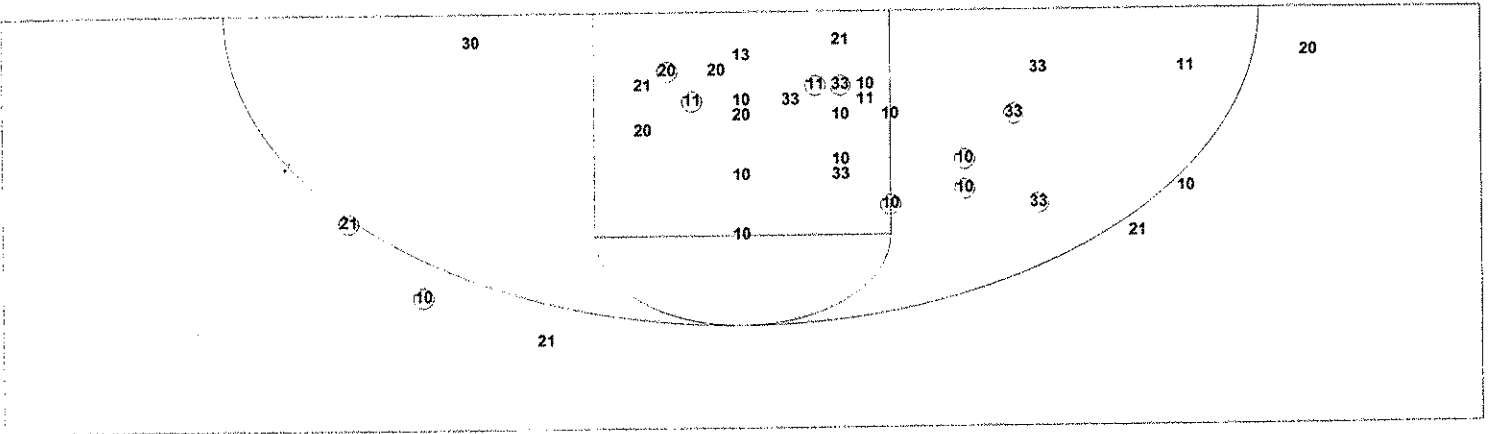
Scoring Breakdown



Scoring Range

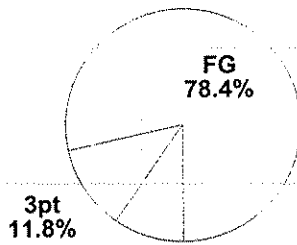


KHSAA Basketball - TEAM SHOT CHART for the Mustangs
DuPont Manual Lady Crimsons vs. Bishop Brossart Mustangs
DATE: 03/21/2001 TIME: 12:00 CST SITE: Girls' Sweet 16-Diddle Arena

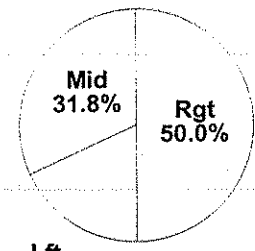


Shot Summary	M/A	%	PTS
3Pt FG	2/6	33.3%	6
2Pt FG	20/42	47.6%	40
Layups - L	2/3	66.7%	4
Layups - R	7/9	77.8%	14
Dunks	0/0	0.0%	0
Putbacks	2/2	100.0%	4
Overall Shooting	22/48	45.8%	46
Free Throws	5/14	35.7%	5
Total Points			51

Scoring Distribution

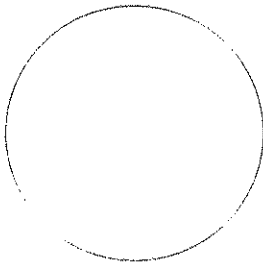


Scoring Locations



By Period	FG	FGA	FG%	3Pt	3PA	3P%	FT	FTA	FT%	ORB	DRB	TR	PF	AST	TO	BS	ST	P/S	
1st Period	3	9	33.3	1	2	50.0	1	4	25.0	8	3	5	8	1	2	7	0	2	0.73
2nd Period	3	9	33.3	0	0	0.00	1	2	50.0	7	3	2	5	5	1	6	0	2	0.70
3rd Period	8	15	53.3	1	2	50.0	2	4	50.0	19	4	2	6	2	3	2	0	2	1.12
4th Period	8	15	53.3	0	2	0.00	1	4	25.0	17	2	1	3	4	4	1	0	3	1.00
Game	22	48	45.8	2	6	33.3	5	14	35.7	51	12	10	22	12	10	16	0	9	0.93

Scoring Breakdown



Scoring Range

